

**GPS**

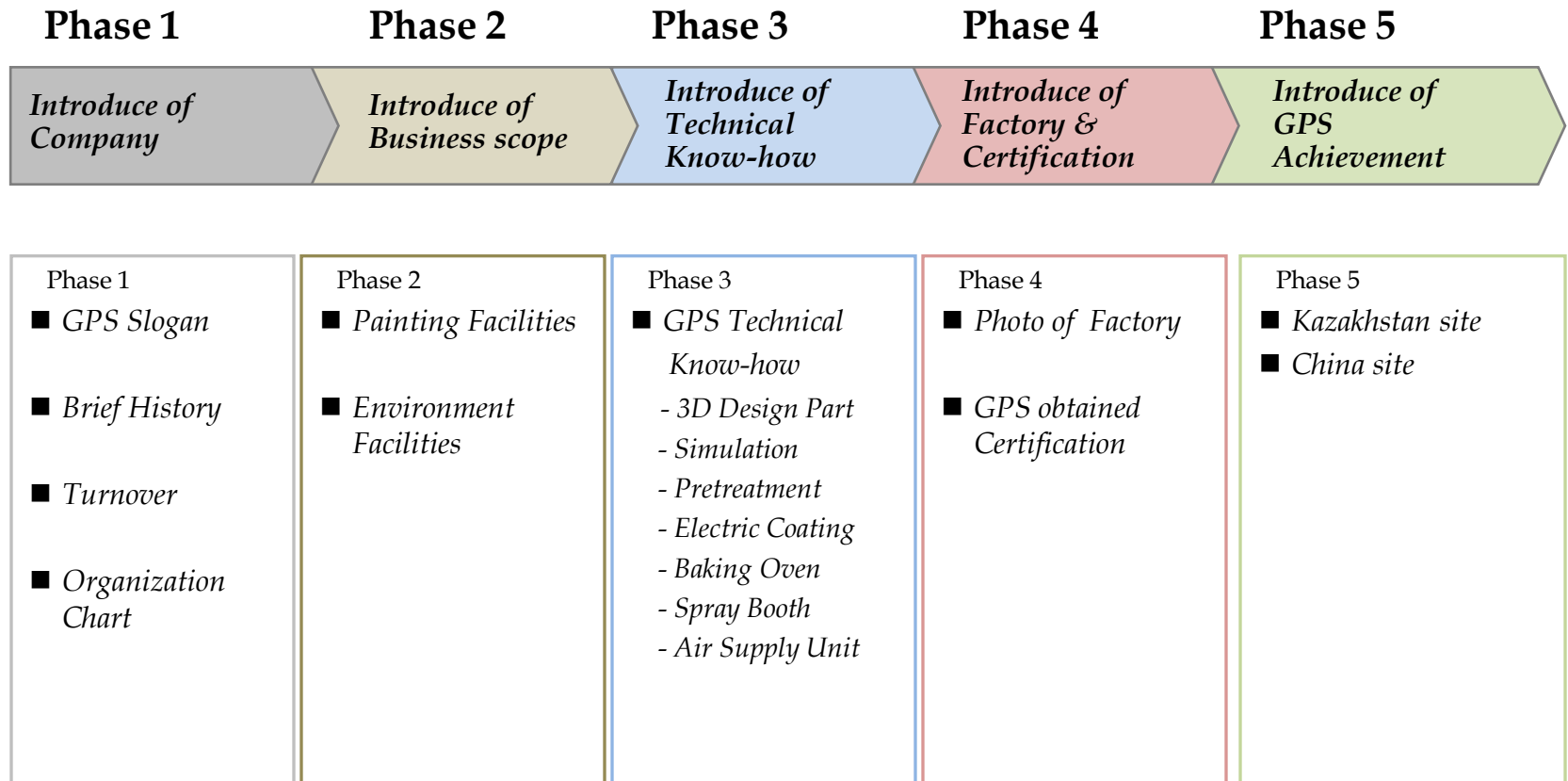
Global Paint System

# Company Introduction

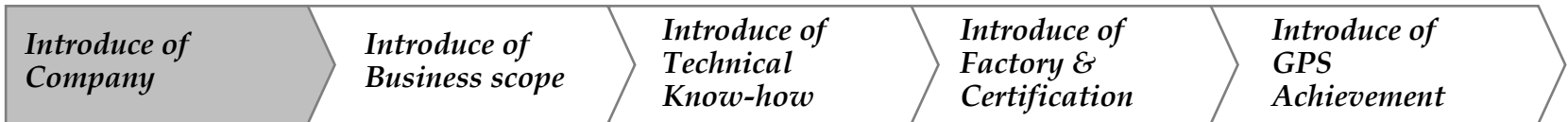
---

September. 2015

# Contents



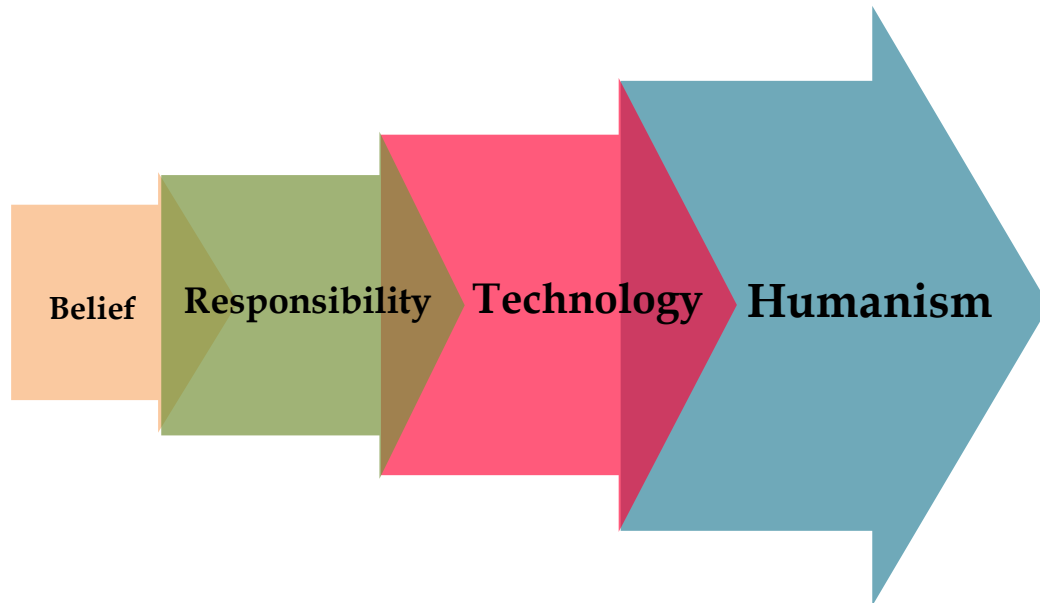
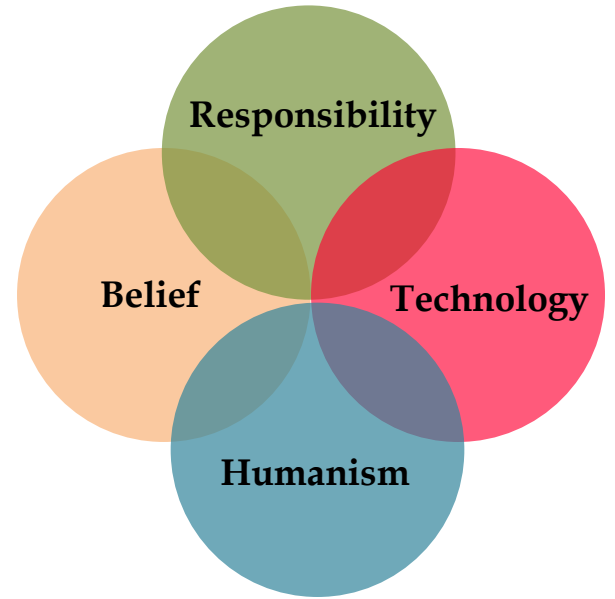
## Phase 1



Phase 1

- *GPS Slogan*
- *Brief History*
- *Turnover*
- *Organization Chart*

# GPS Slogan



## Brief History

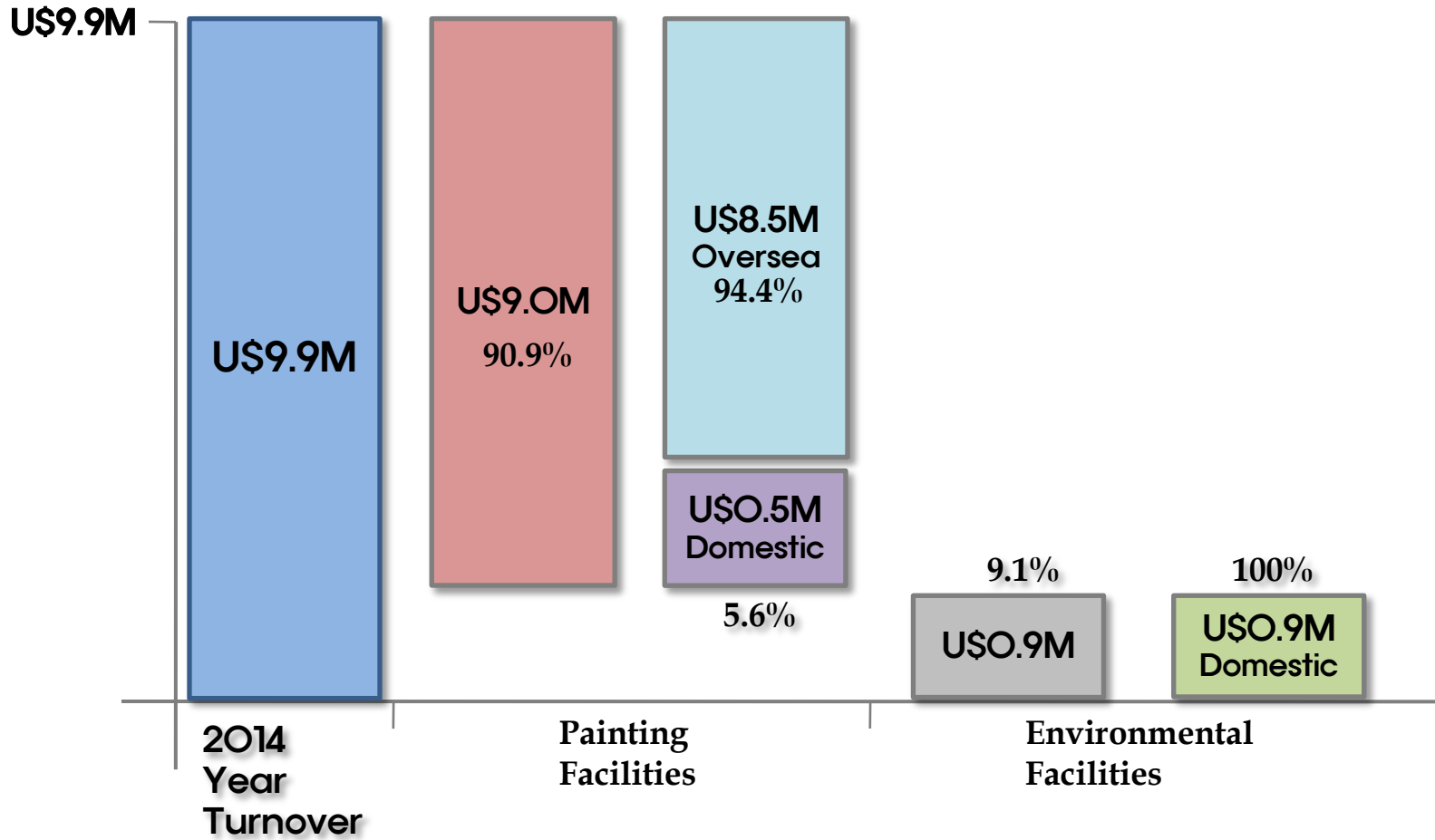
- **2004. 04** Establishment **GPS(Global Painting System) KOREA Co., Ltd.**
- **2004. 06** Completion of 1st Factory, Asan-si, Chungcheongnam-do, Korea
- **2007. 06** Obtained Certificate **ISO 9001 Quality Management system Certificate**
- **2007. 06** Obtained Certificate **ISO 14001 Environmental Management system Certificate**

## Brief History

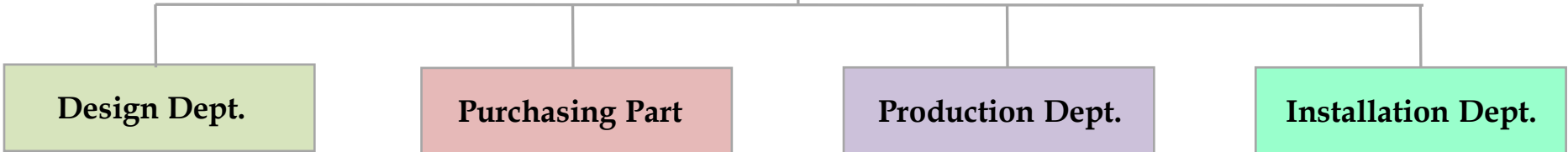
- **Company Name** : GPS Korea Co.,Ltd.
  - **CEO** : Mr. Jong Gu – Lee
  - **Established Year** : Apr. 2004.
  - **Address** : Asan-si, Chungcheongnam-do, South Korea
  - **Employee Numer** : 35
  - **Capital** : US\$ 0.2M
  - **Annual Sales** : US\$ 9.9M
  - **Export Amount** : US\$7.0M
  - **Telephone Number** : Tel 82-2-2163-6591 / Fax 82-2-2163-6593
- Web site** : [www.gpskorea21.co.kr](http://www.gpskorea21.co.kr)      **E-mail** : kevinsyh87@gmail.com

# Turnover

## 2014 year Turnover

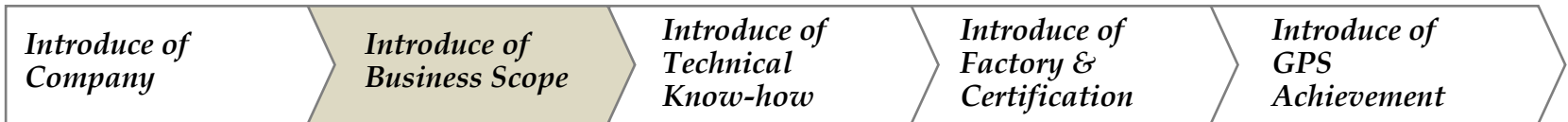


# Organization Chart





## Phase 2



### Phase 2

- *Painting Facilities*
- *Environment Facilities*

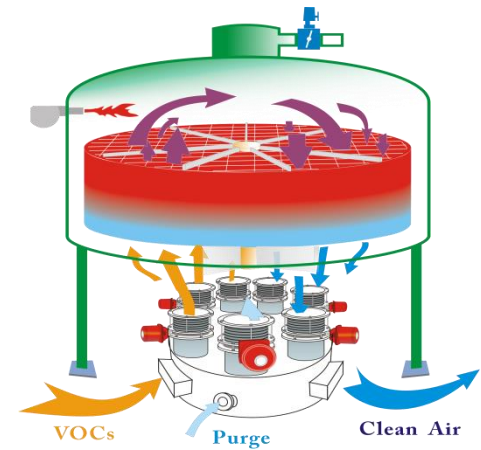
# Business Scope

## Painting Facilities



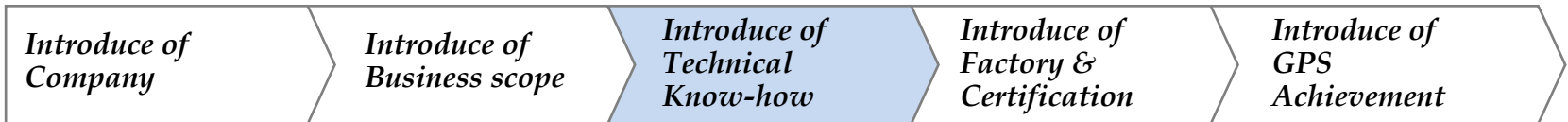
# Business Scope

## Environment Facilities



Kim's Skill for Green®

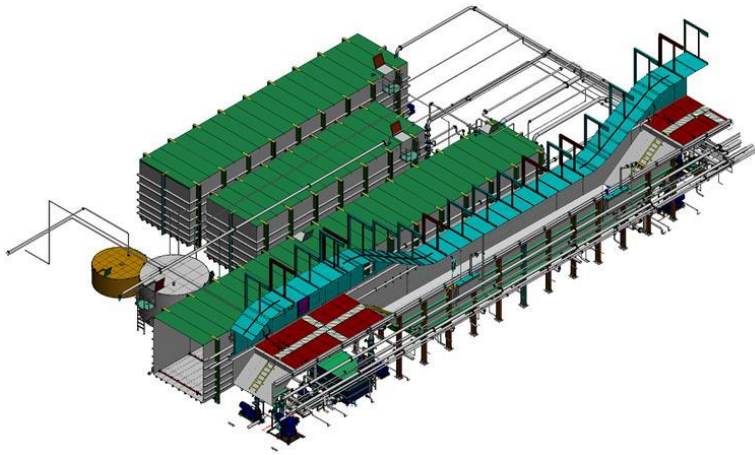
## Phase 3



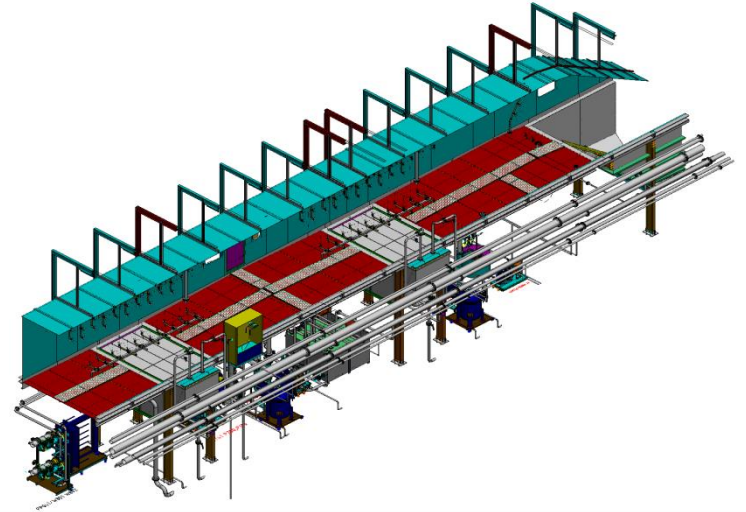
### Phase 3

- *GPS Technical Know-how*
  - *3D Design Part*
  - *Simulation*
  - *Pretreatment*
  - *Electric Coating*
  - *Baking Oven*
  - *Spray Booth*
  - *Air Supply Unit*

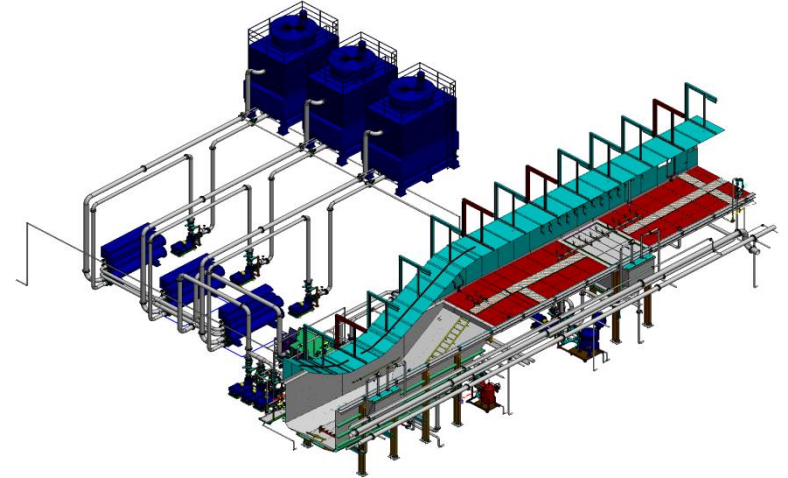
## 3D design for module



The designers have many experiences & technical know how for the painting facilities.

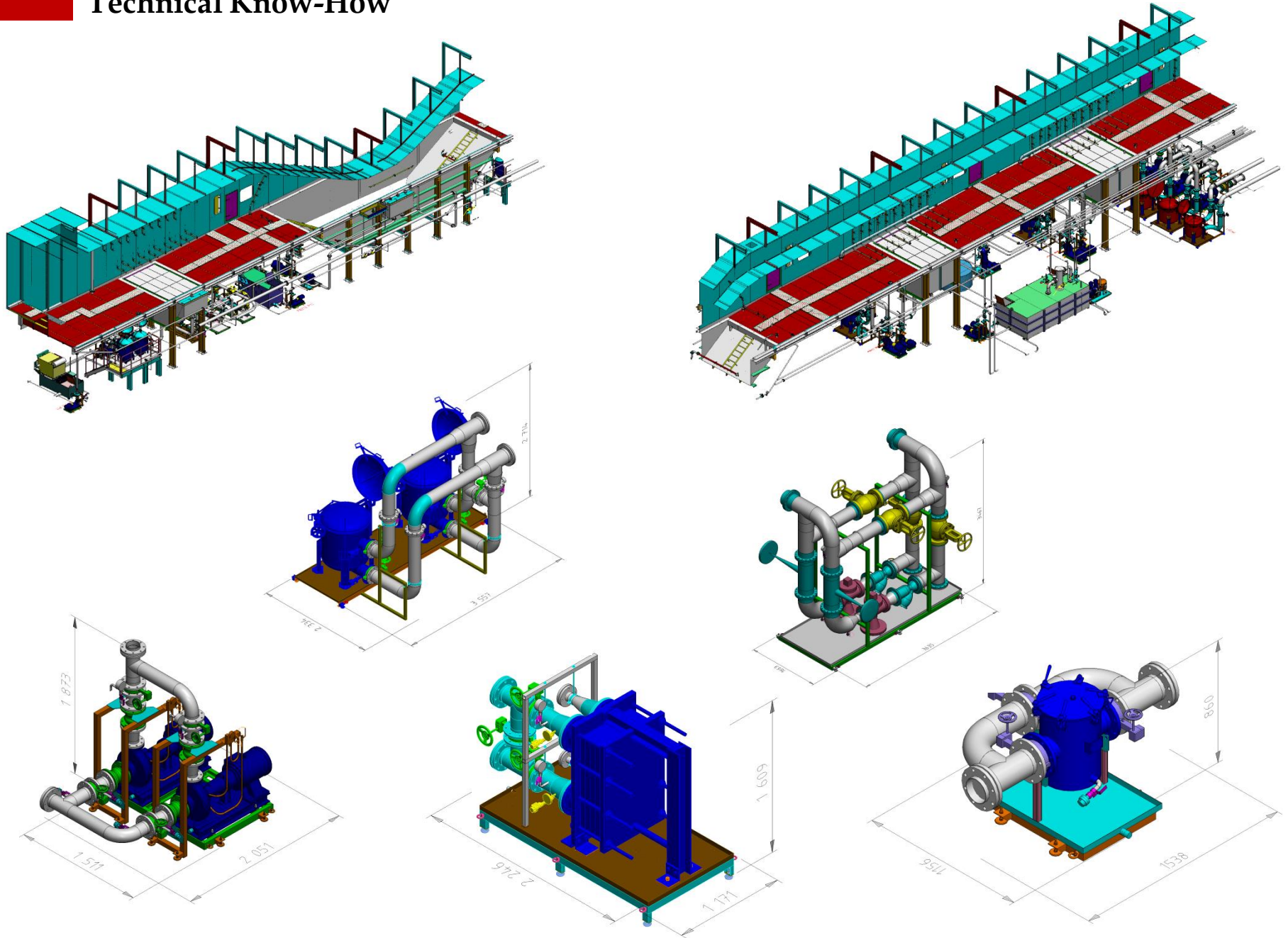


Professional designers for the painting shop are working in GPS Korea Co., Ltd.

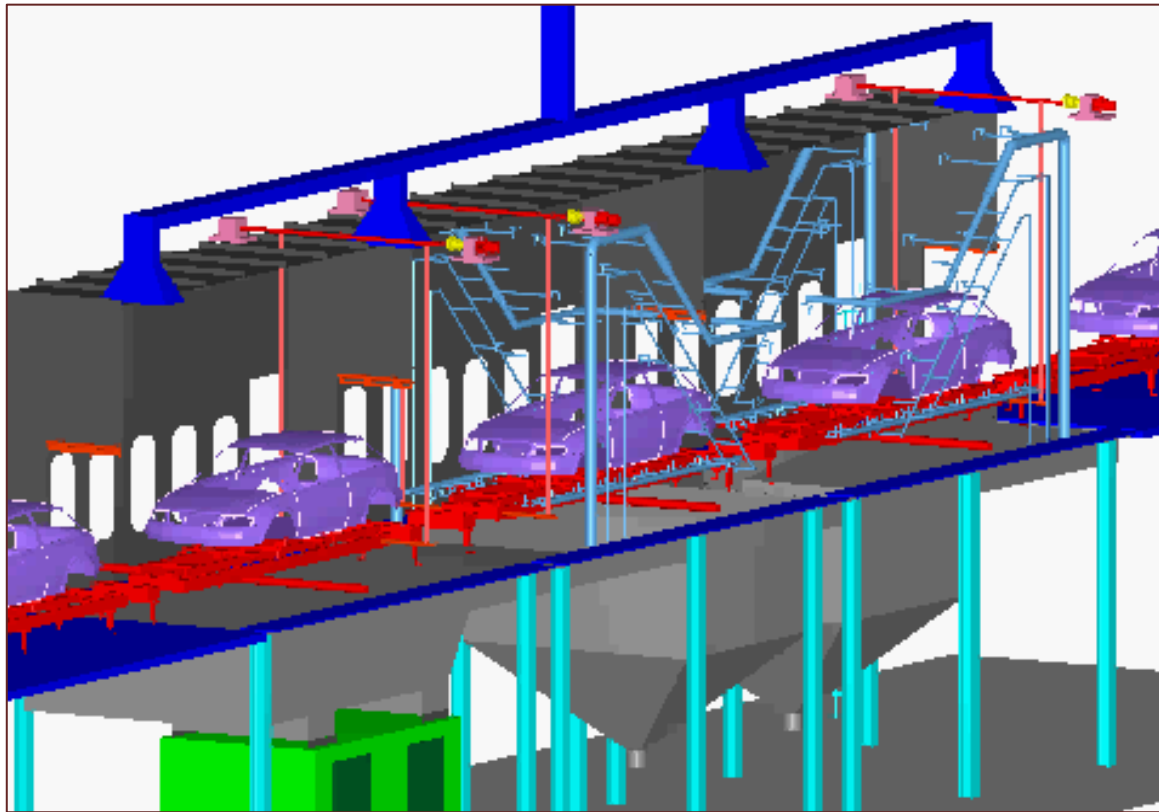


Especially, GPS Korea has provided the best design to use 3D program of the micro-station to client.

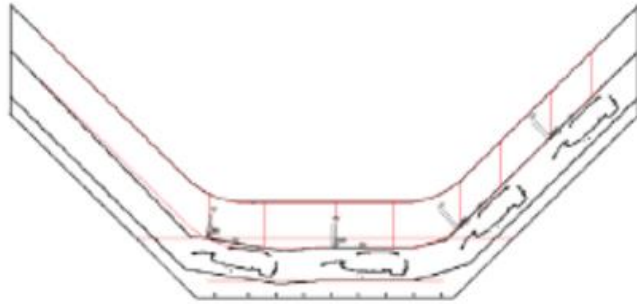
# Technical Know-How



## Simulation for Pre-Treatment Part

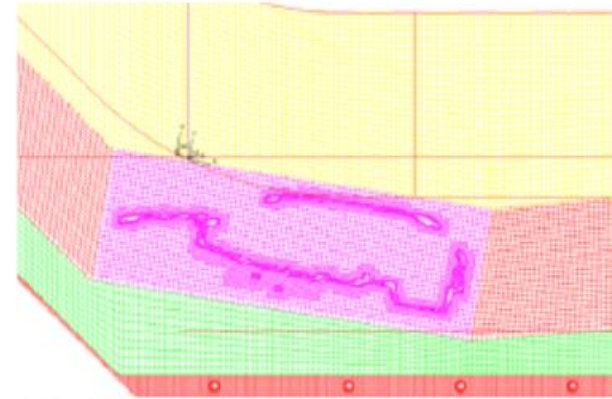


## Simulation for dipping process



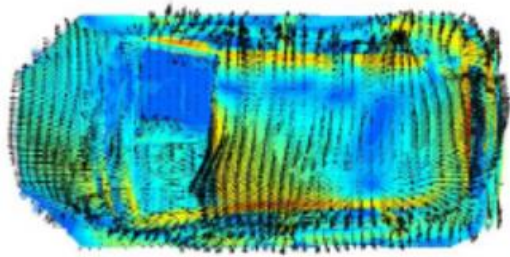
DaimlerChrysler: front 3D View

### Moving Concept



DaimlerChrysler: front 3D View  
Lower left corner of the domain

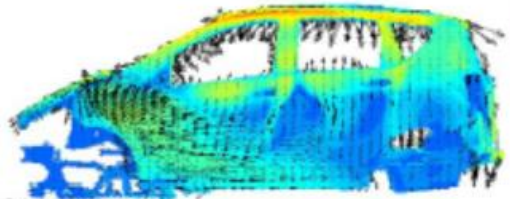
### Moving Grid



Time: 20 sec.

DaimlerChrysler: Back simulation

Velocity magnitude in the vicinity of the car body



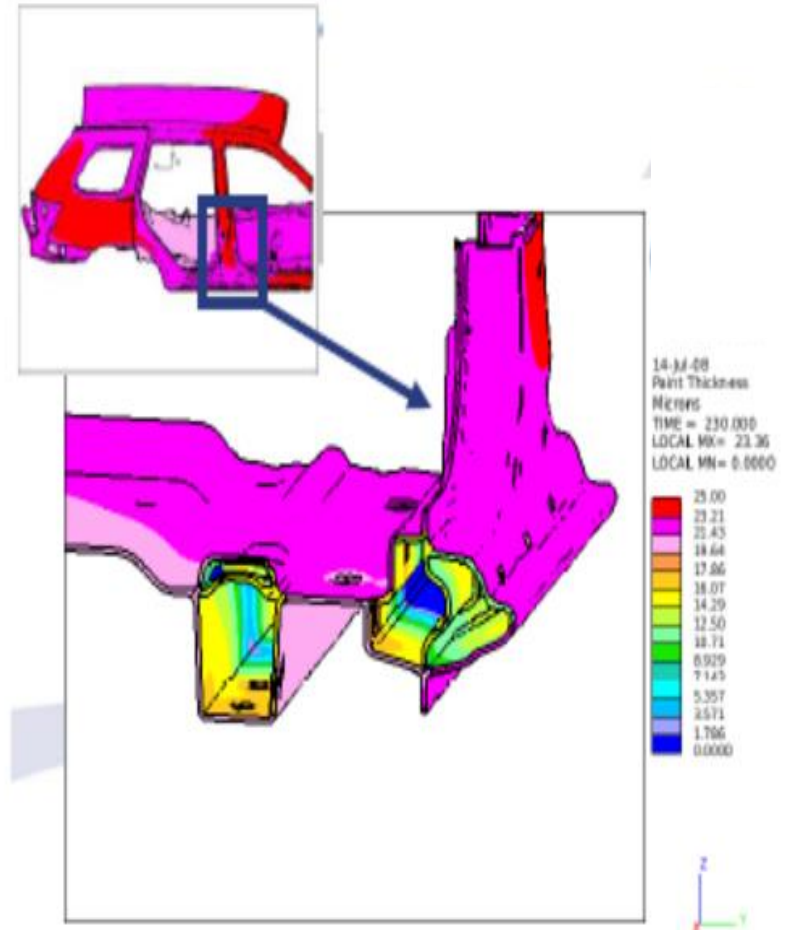
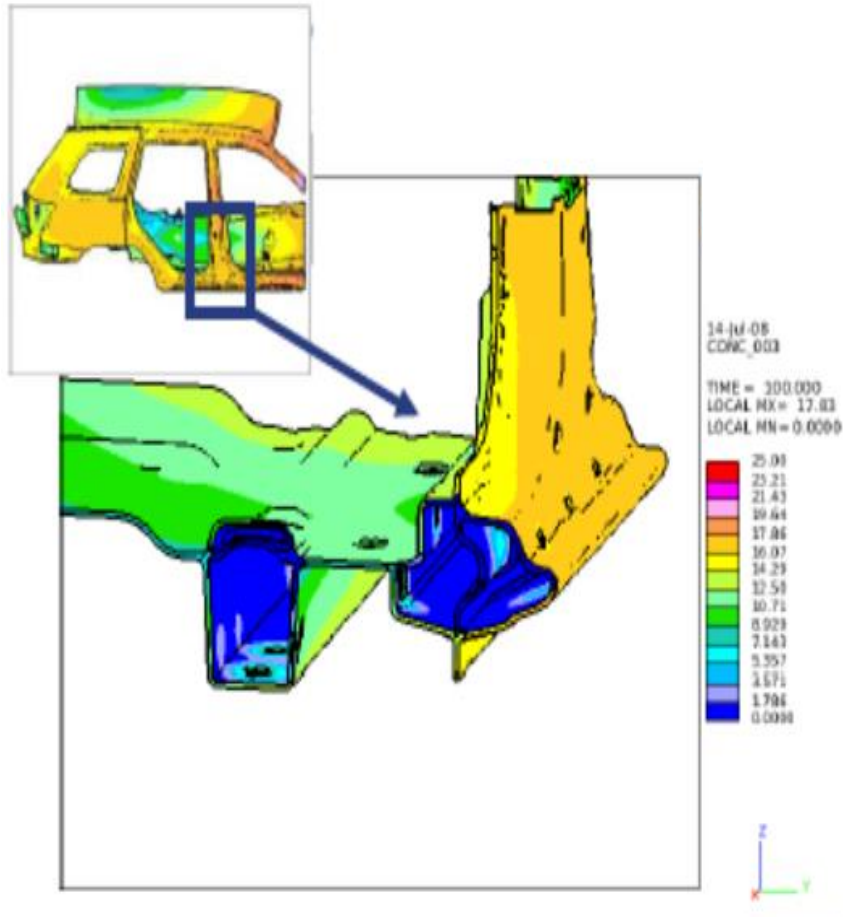
Time: 20 sec.

DaimlerChrysler: Back simulation

Velocity magnitude at a horizontal and vertical section of the car body



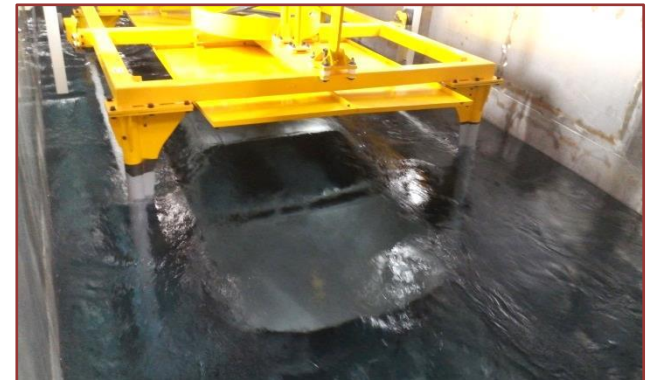
## Simulation for coating thickness



## Pre-Treatment Part

As the pretreatment for painting, degreasing, rinsing and rust prevention conversion coating processes of steel sheet surface are performed in this equipment. This pretreatment is so important that it enhances rust preventive power as well as paint adhesion of the object under treatment and determines the last finishing.

The process consists of five steps; degreasing, rinsing, surface conditioning, phosphating, water rinsing, basically. In case of designing a line, we will determine the treating method according to various kinds of condition such as dirt degree of surface, shape, size, quantity, conveying style of the object, and treating time and the number of process are also taken into consideration in the design.



## Electro Coating Part

This is painting equipment in which the object usually is dipped into water-soluble paint gets deposited on it by giving electronic voltage to both the object and the electrode in paint solution.

The process consists of three steps; electro coating, UF rinsing, DI rinsing, basically.



## Oven Part

Oven is broadly classified into two type, i.e dry off oven for vaporizing water after pretreatment and bake oven for curing paint film after painting.

In bake oven, its inner temperature is determined according to the kind of paint(usually 110C ~ 200C) and either direct heating or indirect heating can be selected according to the kind of heat source.



## Spray Booth Part

Spray booth is composed of preparation room, painting, setting room, and air conditioner, and for arresting the paint mist there are Back shower, Pumpless, Venturi etc. Which are all wet type by means of water circulation, and there is also dry filter as a simple easy type.

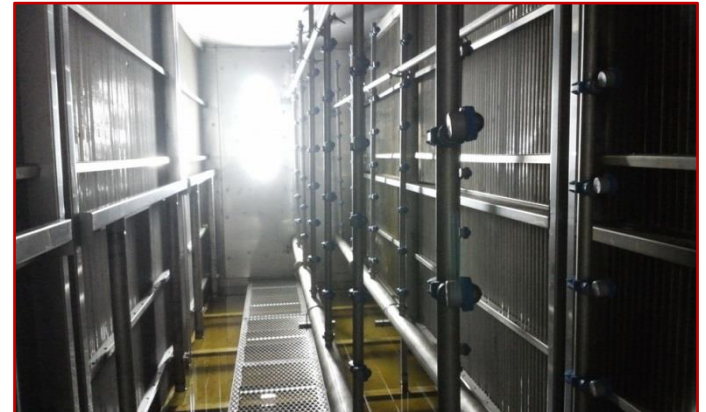
Our company provides paint booths which are of high efficiency and meet various required conditions such as clean operation environment, energy saving.



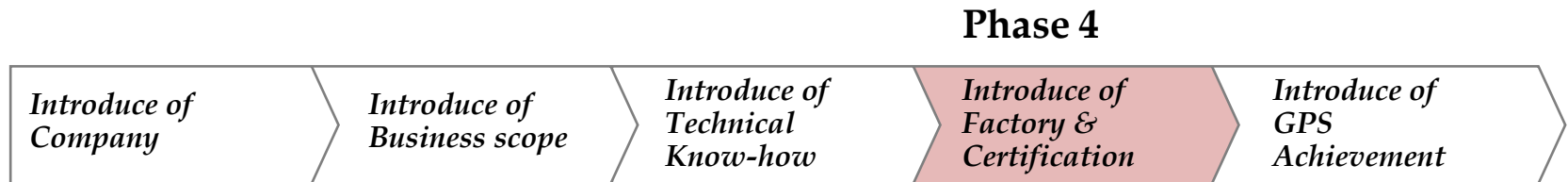
## Air Supply Unit Part

This unit can be used for temperature and humidity control for paint shop.

Especially, spray booth and working areas require air of a specific quality (i.e. cleanliness, temperature and humidity) and they need it in sufficient quantity.



# Contents



Phase 4

- *Photo of Factory*
  
- *GPS obtained Certification*

# Photo of Production Facility





# GPS obtained certification

## ISO Quality Management System certificate



Certificate No : RQM3421

### Quality Management System Certificate

This is to certify that  
the quality management system of

## GPS KOREA CO.,LTD.

at  
#596-1, Sandong-ri, Eumbong-myeon, Asan-si, Chungnam, Korea

Has been found to conform to the Quality Management System Standards:

*KS Q ISO 9001:2009 / ISO 9001:2008*

This Certificate is valid for the following product or service ranges:

*Design, Manufacturing, Painting, Installation and Servicing of  
Steel Structure*

Issue Date  
May. 27. 2013

Certification Date : Jun. 18. 2013      Valid Date : Jun. 17. 2016

---



Authorized By   
Ki Ho Park, President

-  Mark indicates that KMAR is accredited by the KAB (No. KAB-CC-17)
-  Mark indicates that KMAR is Accredited by the member of the International Accreditation Forum Multilateral Recognition Arrangement
- K SIC CODE :17/ Initial certification date: Jun. 18. 2007
- KMAR/ 1dong, 12F, Ace High Tech City, #55-20, Mullaee-dong, 3-ga, Yeongdeungpo-gu, Seoul, 150-972, Korea

## ISO Environmental Management System certificate



Certificate No : REM0997

### Environmental Management System Certificate

This is to certify that  
the environmental management system of

## GPS KOREA CO.,LTD.

at  
#596-1, Sandong-ri, Eumbong-myeon, Asan-si, Chungnam, Korea

has been found to conform to the Environmental Management System Standards:

*KS I ISO 14001:2009 / ISO 14001:2004*

This Certificate is valid for the following product or service ranges:

*Design, Manufacturing, Painting, Installation and Servicing of  
Steel Structure*

Issue Date  
May. 27. 2013

Certification Date : Jun. 18. 2013      Valid Date : Jun. 17. 2016

---

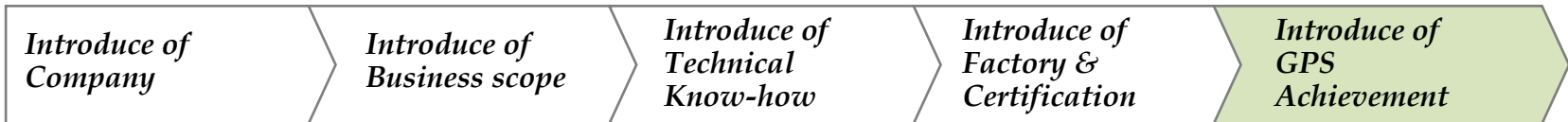


Authorized By   
Ki Ho Park, President

-  Mark indicates that KMAR is accredited by the KAB (No. KAB-EC-17)
-  Mark indicates that KMAR is accredited by the member of the International Accreditation Forum Multilateral Recognition Arrangement
- K SIC CODE :17/ Initial certification date: Jun. 18. 2007
- KMAR/ 1dong, 12F, Ace High Tech City, #55-20, Mullaee-dong, 3-ga, Yeongdeungpo-gu, Seoul, 150-972, Korea

# Contents

## Phase 5



### Phase 5

- *Kazakhstan site*
- *China site*
- *Supply records of GPS*

## Photo of Kazakhstan site



# Photo of China site



# Supply records of GPS

## Main Achievement

Year	Orderer	Project Name
2004	Durr Korea	Working Booth Manufacture/Installation in HMC Montgomery, USA
	Durr Korea	PT/ED Manufacture/Installation in IzhMash-Avto, RUSSIA [Refurbishment]
	Durr Korea	AHU Manufacture/Installation in IzhMash-Avto, RUSSIA [Refurbishment]
	SSangyong	Exhaust Facility in Paint Mixing Room Manufacture/Installation, KOREA
	Durr Korea	OVEN Manufacture/Installation in GM DAT
2005	Durr Korea	Working Booth Manufacture/Installation at KIA, SLOVAKIA
	Daehan Life	Chiller System Installation, KOREA
	ShinHan Mech.	Air Piping System Installation at Woolsan, KOREA
2006	Durr Korea	Oven Manufacture/Installation in HMC, TURKEY
	Hyundai Rotem	AHU, Pipe, Duct Manufacture/Installation at KIA, CHINA
	Youngseung	Utility Pipe & Duct Manufacture/Installation at Youngseung plant, China
	Durr Korea	Oven Manufacture/Installation at HMC Woolsan#5 plant, KOREA

# Supply records of GPS

## Main Achievement

Year	Orderer	Project Name
2007	RZGA	Mini-bus Body Paint System, Turnkey Base (10UPH), RUSSIA
	Jin Tech	AHU Eliminator Manufacture at HMC Beijing, CHINA
	TagAZ Korea	T/UP & Shower Test Booth Manufacture at TagAZ, RUSSIA
	TagAZ Korea	Air Supply Unit Manufacture at TagAZ, RUSSIA
	Century	Cooling Tower & Piping Manufacture/Installation, KOREA
2008	Durr Korea	AHU Manufacture/Installation in TagAZ, RUSSIA
	TagAZ Korea	AZOV Body Paint Shop, Turnkey Base (44.5UPH), RUSSIA
	Durr Korea	AHU Manufacture in TagAZ Porter Line, RUSSIA
	Daewoo Eng.	Salt Transfer System in Renault-Samsung, KOREA
2009	Century	MCR HVAC System in Wolsung Nuclear Power Plant, KOREA
	Century	Water Chiller Piping System in Wolsung Nuclear Power Plant, KOREA
	Hyundai Rotem	DYKMC#2 AHU Manufacture, CHINA
	Century	PELLET Drying System, VIETNAM

# Supply records of GPS

## Main Achievement

Year	Orderer	Project Name
2010	Hyundai Rotem	DYKMC#3 AHU & OVEN Manufacture/Installation, CHINA
	KC-Cottrell	Steel Structure & Pipe Spool for Air Cooled Heat Exchanger, KOREA
	STA Product	Paint Spray Booth Manufacture/Installation, KOREA
	Koam	AHU Manufacture/Installation in Wolsung Nuclear Power Plant, KOREA
2011	Bulmu Tech	Pohang Heavy Machinery Track Line in Hyundai Steel, KOREA
	Ssangyong	Remodel Paint Flaking Booth in #2 Plant, KOREA
	Century	AHU Manufacture for Ko-Ri Nuclear Power Plant, KOREA
	CNC Enterprises	Paint Shop Installation at Hyundai Heavy Industries, USA
	Edwards	Paint Spray Booth Manufacture/Installation, KOREA
2012	Century	HVAC & Chiller Piping System at Ko-Ri Nuclear Power Plant, KOREA
	CNTUS AEGIS	Eliminator Manufacture, RUSSIA
	CNC Enterprises	CNJ Paint Shop Design/Manufacture/Installation, USA
	Ssangyong	Install Primer Booth Body Heating at #1 Paint Shop, KOREA





**We are very pleased to have an opportunity to  
introduce GPS to you !**